

PRAYUSHA

elite

2 & 3 BHK LAVISH APARTMENTS

Ambitious Living



2 & 3 BHK LAVISH APARTMENTS

On Going Projects



Prayosha Star
2 & 3 BHK Flates & Shops



Prayosha Dream
1, 2 & 3 BHK Flates & Shops



Prayosha Prime
1, 2 & 3 BHK Flates & Shops



Prayosha Exotica
4 BHK Flates



Prayosha Home
1 & 2 BHK Flates & Shops



Prayosha Pride
1 & 2 BHK Flates

Ultra Modern Homes

Elevating joy, Comfort and Luxury

A majestic residency spreads open the door to refined contemporary living. It's a dream abode for life and lifestyle. It's this beautiful place in Mota-Varachha called Prayosha Elite a home to fine life.



ENTRANCE GATE



An Address Supremely **LAVISH** And High On Contemporaries

Every heart desires a modern and lavish home. Whether you are a small nuclear family or a big joint family, there's a wide range of contemporary lifestyle homes to choose from 2 BHK & 3 BHK homes at Prayosha Elite.



SECURITY CABIN



ENTRANCE GATE



OPEN GARDEN



SITTING AREA



GARDEN AREA



 PRAYOSHA
elite
2 & 3 BHK LAVISH APARTMENTS



Defines Design With
BLEND
Of Style And Functionality

Prayosha Elite stands tall in Mota-Varachha with its captivating design and structure. It exudes a distinct class in its appearance while it offers a host of modern amenities for the comfort of the inmates.



FULLY AUTO
ELEVATOR



DOUBLE BASEMENT
PARKING



S.S. GLASS
BALCONY

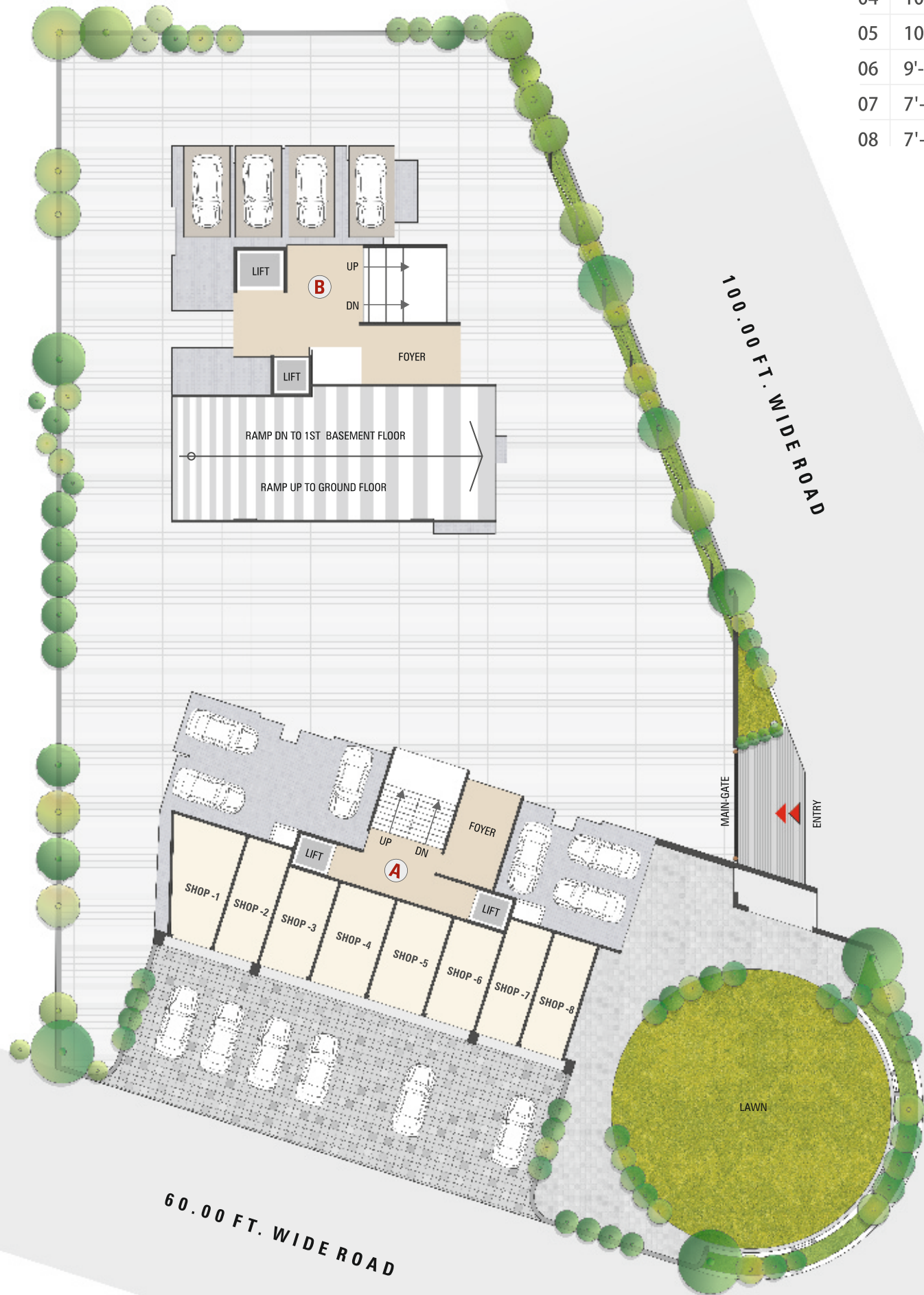




GROUND FLOOR PLAN

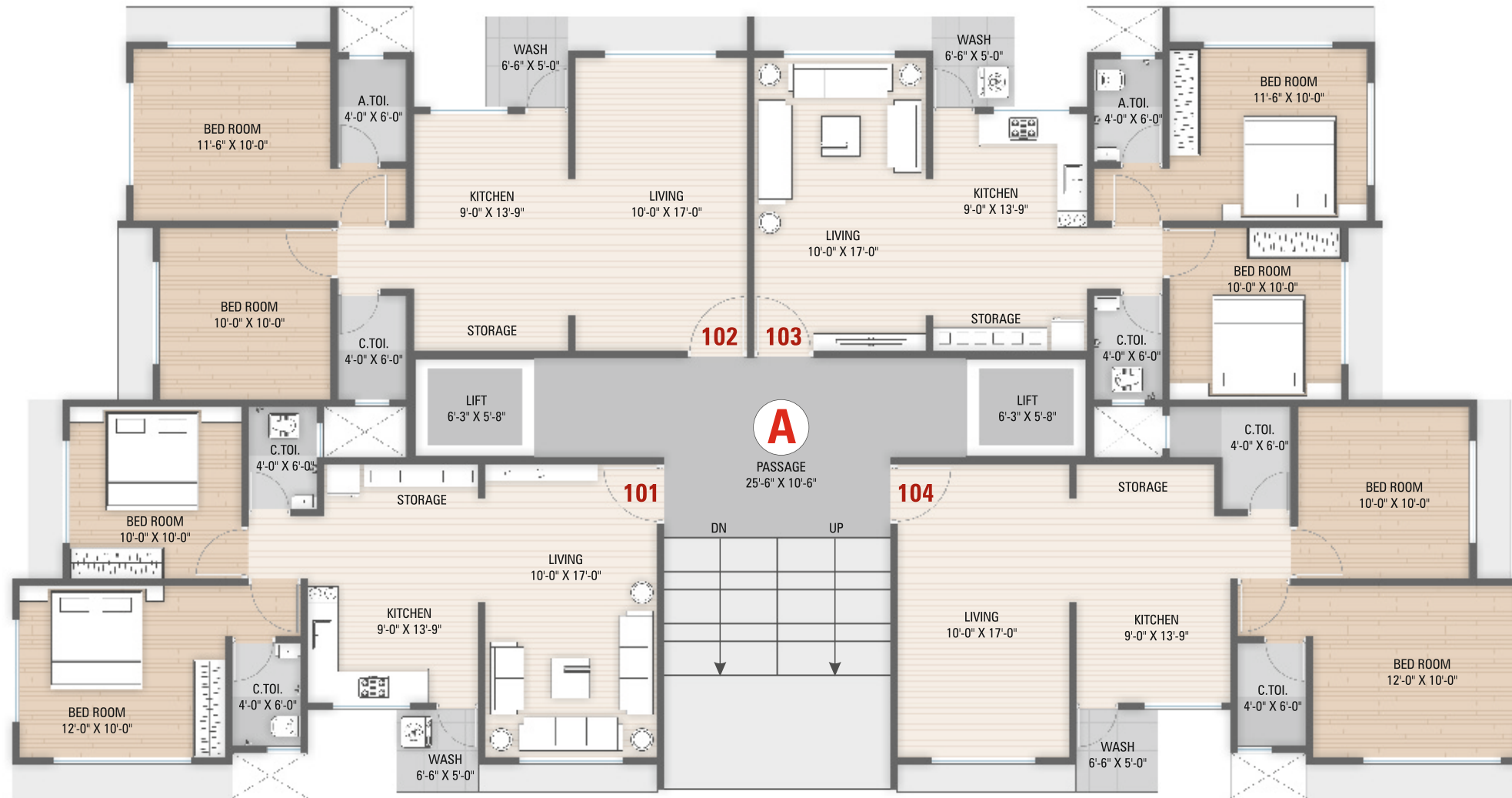


- | | |
|----|------------------|
| 01 | 7'-6" X 20'-8" |
| 02 | 8'-0" X 20'-8" |
| 03 | 9'-0" X 17'-10" |
| 04 | 10'-0" X 17'-10" |
| 05 | 10'-0" X 17'-10" |
| 06 | 9'-0" X 17'-10" |
| 07 | 7'-9" X 20'-8" |
| 08 | 7'-9" X 20'-8" |



TYPICAL FLOOR PLAN





TYPICAL
FLOOR PLAN

1ST TO 12TH FLOOR PLAN



PRAYASHA
elite

2 & 3 BHK LAVISH APARTMENTS



A - BUILDING



13TH
FLOOR PLAN



TYPICAL FLOOR PLAN

1ST TO 12TH FLOOR PLAN



13TH FLOOR PLAN



Luxury of Inspiring Interior

Living large comes naturally when your home is so spaciouly appointed and where modern and elegant interiors exude beauty and class.



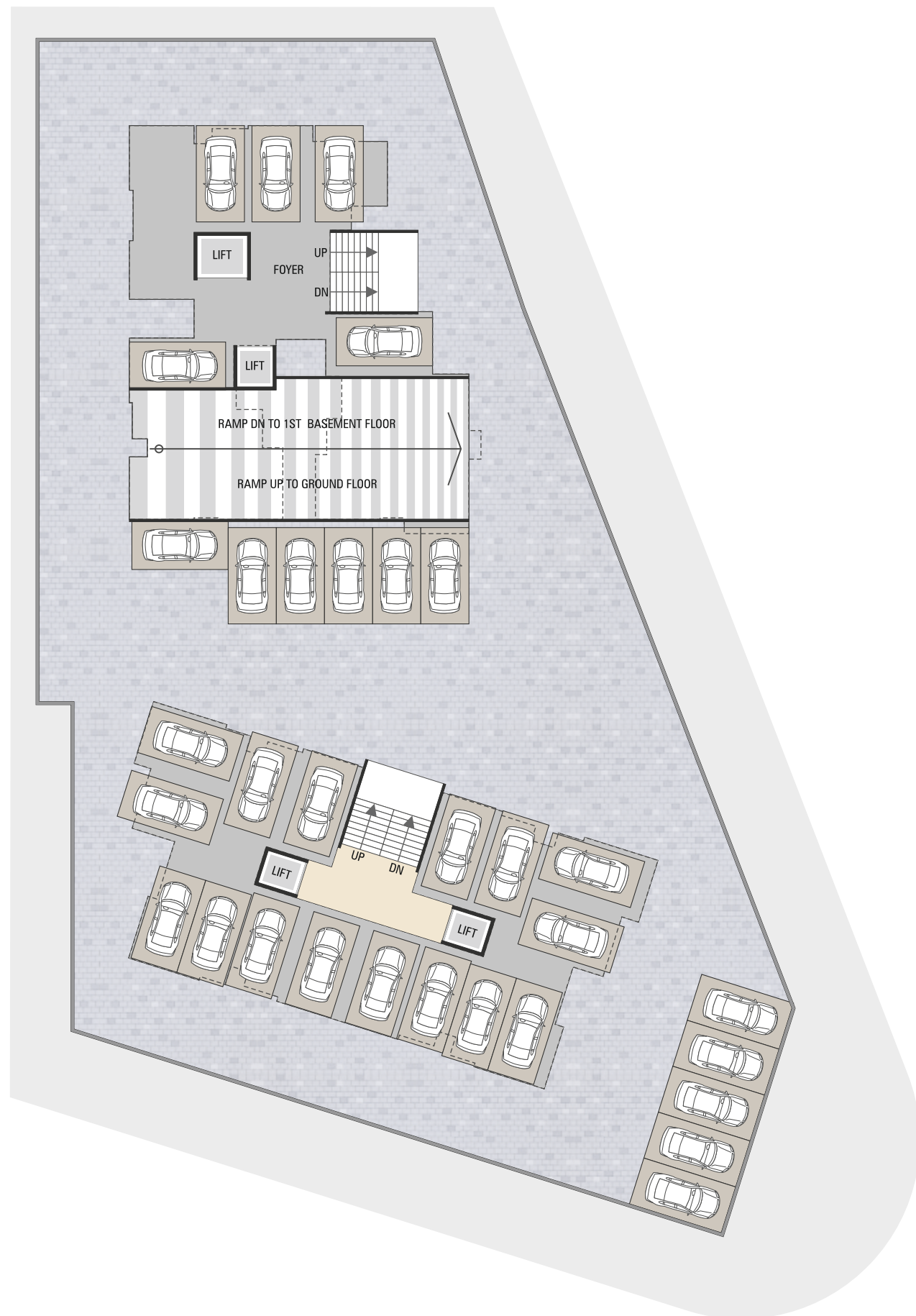
2 & 3 BHK LAVISH APARTMENTS





BASEMENT FLOOR PLAN

N 1ST & 2ND BASEMENT



PRAYUSHA
elite
2 & 3 BHK LAVISH APARTMENTS





PRAYASHA
elite
2 & 3 BHK LAVISH APARTMENTS

INTERNAL SPECIFICATIONS

FLOORING

Living / Kitchen with 32” x 32” and Bedroom with 24” x 24” Granamite Tiles.

KITCHEN

Kitchen platform of granite stone with S.S. Sink Kitchen dado tiles up to lintel level.

BATH & TOILET

Elegantly designed toilet with designers tiles dado up to lintel level.

WINDOWS

All windows of anodized aluminum Section. With reflective glass.

BALCONY

S.S. Railing with glass in balcony.

GENERAL SPECIFICATIONS

GENERATOR FOR POWER BACKUP

Generator for sufficient power backup for common area of building.

ENTRANCE GATE & COMPOUND WALL

Well designed compound wall and main gate with decorative lights.

SUPPLY OF WATER SOURCE

Supply of municipal water & auxiliary source from borewell.

PARKING

Parking space at ground and basement levels.

INTERNAL FINISH

STAIRCASE

Staircase finished with granite Stone / vitrified tiles and S.S. Railing.

PASSAGE

Granite Stone / Virtified tiles in flooring design with lift cladding.

ENTRANCE FOYER

Well organized foyer with reception and waiting lounge also equipped with name plates.

LANDSCAPE

Well designed & executed landscape.

ELECTRIFICATION

Concealed circuit wiring of standard (ISI mark) company with modular switches. M.C.B. in individual flat for safety. Electric points for A.C. in Masters bedrooms. Electric points for T.V. and washing machine.

DOORS

Main door frames of sal wood with other door frames in granite or marble. Decorative main door and all others will be flush doors.

PLUMBING

Concealed plumbing with standard sanitary ware. C.P. Fittings UPVC pipes for water supply, PVC pipes for drainage.

WALL FINISH

All internal walls finished with putty.

SECURITY SYSTEM

Campus will be protected by compound wall at the boundaries highly secured campus with security cabin at Entry - Exit & CCTV at main gate and building foyer 24 hours security in campus.

ELEVATORS CONFIGURATION

Premium quality auto door lift with intercom and safety device for emergency separate power backup for lift in case of breakdown of electricity supply.

FIRE SAFETY

Fire safety provision as per the authority norms.

EXTERNAL FINISH

CONSTRUCTION

Enhanced structure for safety against earthquake at relevant zone and masonry work in brick.

PLASTER

Double coat mala plaster inside flat.

COLOUR

Texture on external wall (as per elevation requirement) of the building.

TERRACE

Double coat waterproofing finished.



ARCHITECT



MINARC
ASSOCIATE

KANTILAL G. PATEL

STRUCTURE



SANGANII CONSULT
Structural Engineer & Approved Valuer

MAYUR SANGANI (M.E.CIVIL)

SITE ADDRESS



PRAYOSHA elite
2 & 3 BHK LAVISH APARTMENTS

FP-49/A TP-25, Near L.P Savani Sanshkar Valley School,
Mota Varachha, Surat.

FOR INQUIRY

91337 51000

www.prayoshagroup.in

Disclaimer : • Premium quality materials or equivalent branded shall be used for all construction. • DGVCL Charges, Legal charges and other Govt. Charges Shall be paid separately. • Maintenance deposit shall be paid separately. • Right of any changes in dimensions, design & specification will be reserved with the developer, which shall be binding for all members. • External changes strictly not allowed. • Stamp duty, registration fees, charges on allotment and possession of the property shall be borne by purchaser, applicable as per prevailing law. • Any additional liabilities due to change in the by laws, stamp duty govt. laws shall be borne by the members. • New rate will be applicable in case of delay in payment terms. Terms & condition will be as per separate agreement. • This brochure is meant only for information, presentation & guidance purposes, it is not an authorized document or an agreement. This does not form the basis of any contract. • Variation may occur as per local regulation and policy of improvement.

PROJECT BY



www.prayoshagroup.in